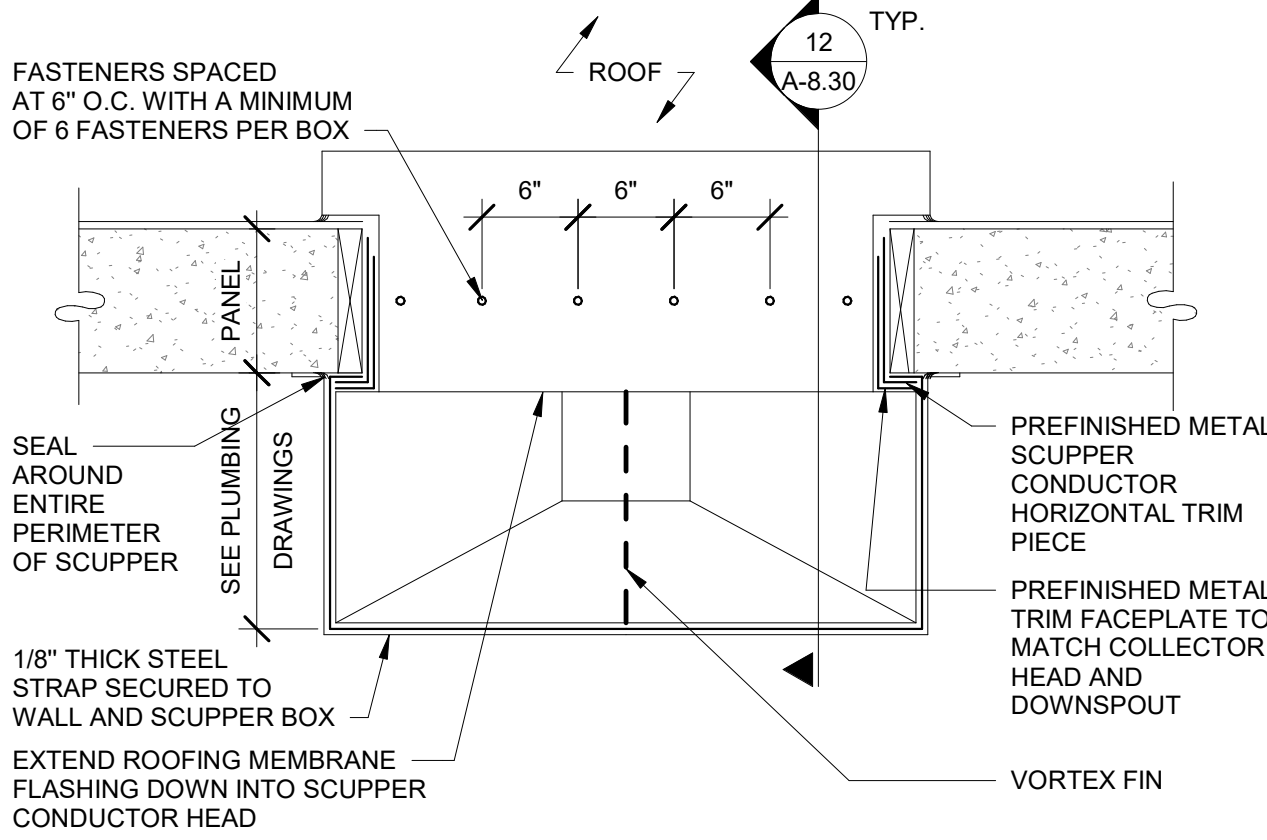


NOTE: ALL SHEET METAL TO BE MIN. 24GA. FOR SCUPPER BOX AND DOWNSPOUT.
ALL SCUPPER CONDUCTOR PARTS TO BE TABBED, RIVETED AND CAULKED AS REQUIRED
COORDINATE PONDING WITH STRUCTURAL ENGINEER

ORDER OF INSTALLATION:

1. ROOFING WRAP AT OPENING TO OVERLAP CONCRETE
2. MOUNT CONDUCTOR HEAD
- 2.1. HORIZONTAL TRIM PIECE
3. FLASH CONDUCTOR HEAD WITH ROOFING MEMBRANE 1" BELOW CONDUCTOR HEAD
4. MOUNT FACE PLATE
5. FLASH FACE PLATE WITH TOP 1" BELOW CONDUCTOR HEAD
- 5.1. CAULK TOP/SIDE OF FACE PLATE



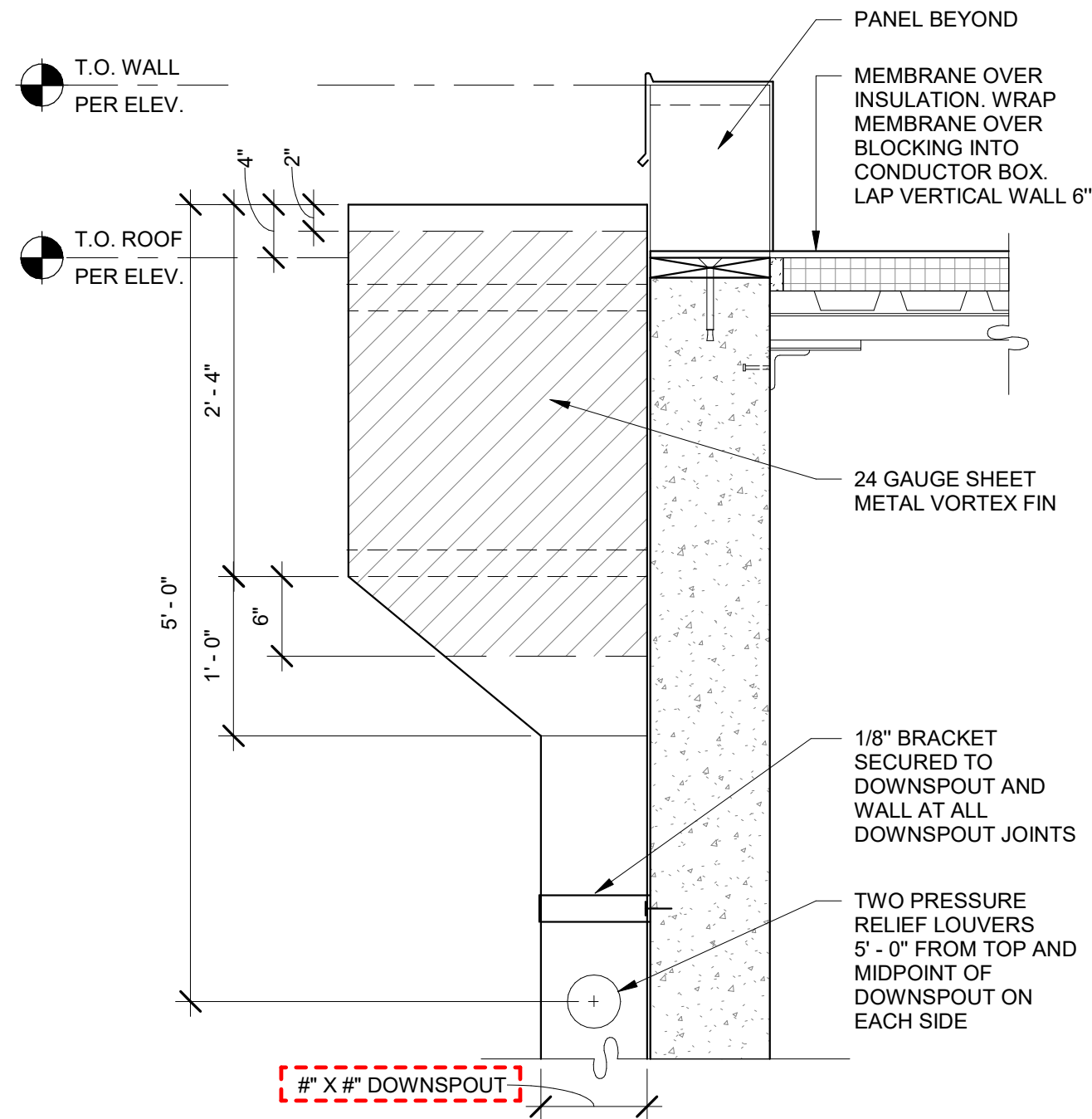
SCUPPER BOX PLAN DETAIL

A3.1 | REVISION DATE: 04.04.2019 | SCALE: 1" = 1'-0"

17

DESIGN BUILD MANAGER TO VERIFY DIMENSIONS

NOTE: - ALL SHEET METAL TO BE MIN. 24GA. FOR SCUPPER BOX AND DOWNSPOUT.
- COPING NOT SHOWN FOR CLARITY.
- SEE PLUMBING DRAWINGS.



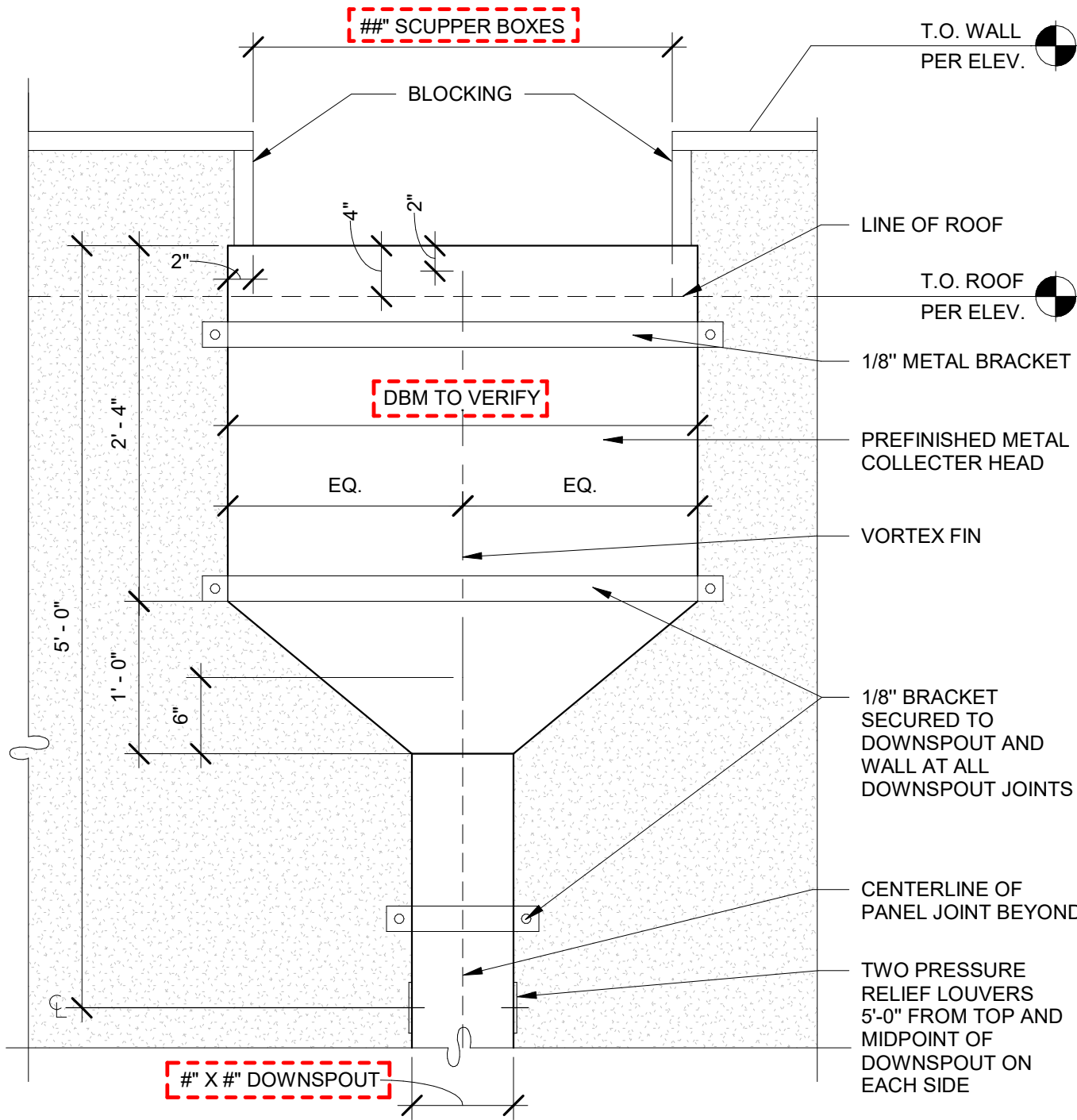
SCUPPER BOX SECTION

A3.2 | REVISION DATE: 11.12.2018 | SCALE: 1" = 1'-0"

12

DESIGN BUILD MANAGER TO VERIFY DIMENSIONS

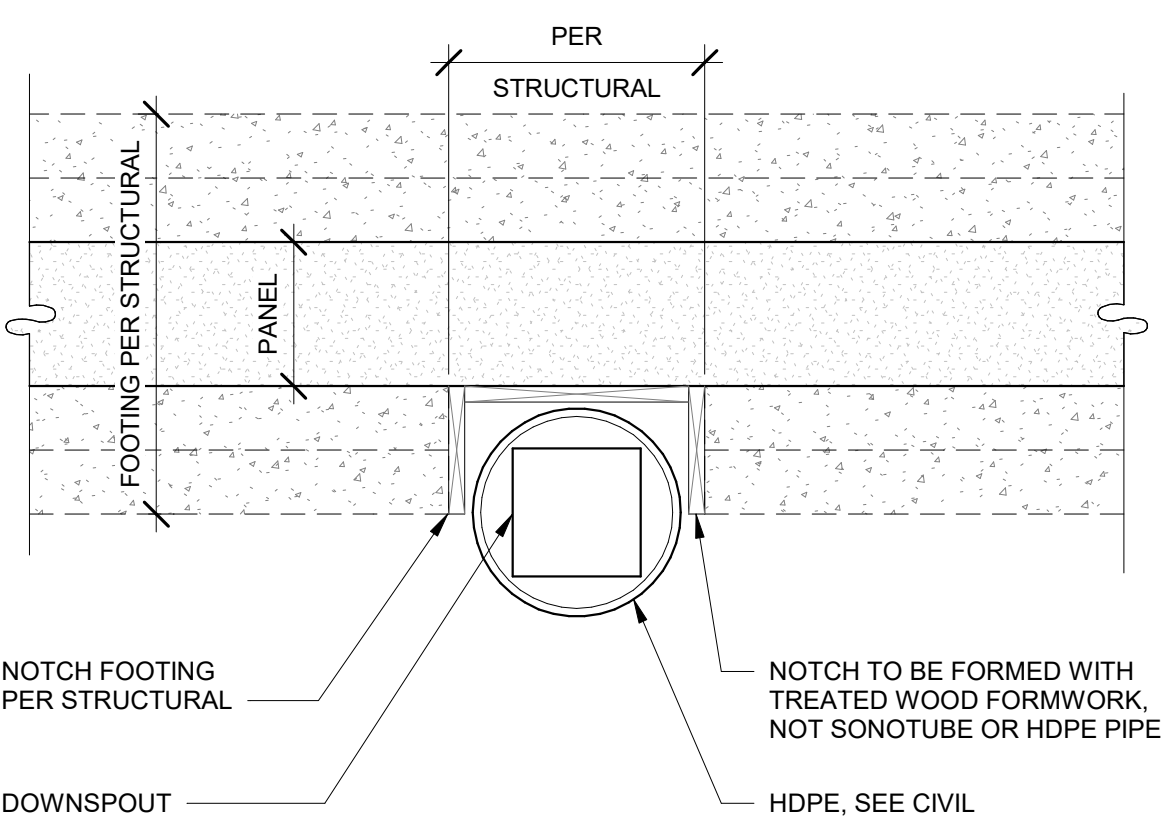
NOTE: - ALL SHEET METAL TO BE MIN. 24GA. FOR SCUPPER BOX AND DOWNSPOUT.
- COPING NOT SHOWN FOR CLARITY.
- SEE PLUMBING DRAWINGS.



SCUPPER BOX ELEVATION

A3.3 | REVISION DATE: 11.12.2018 | SCALE: 1" = 1'-0"

7



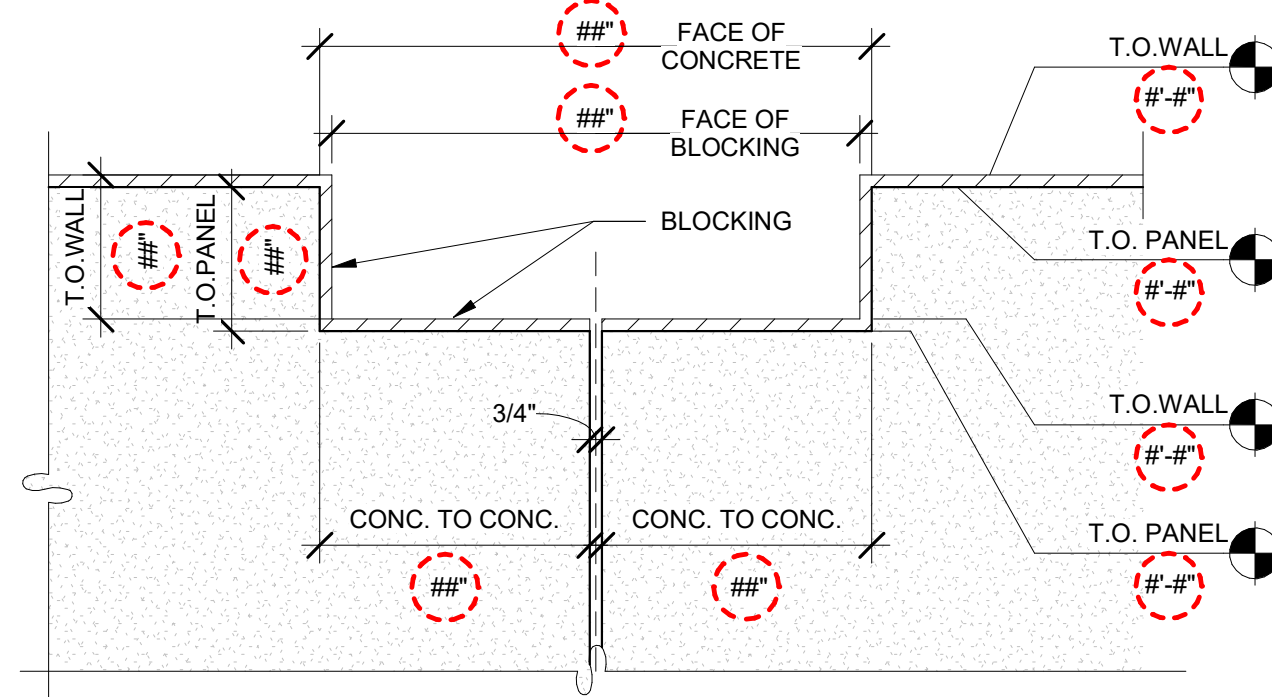
CONNECTION FOOTING NOTCH

A3.4 | REVISION DATE: 03.05.2019 | SCALE: 1" = 1'-0"

1

DESIGN BUILD MANAGER TO VERIFY DIMENSIONS

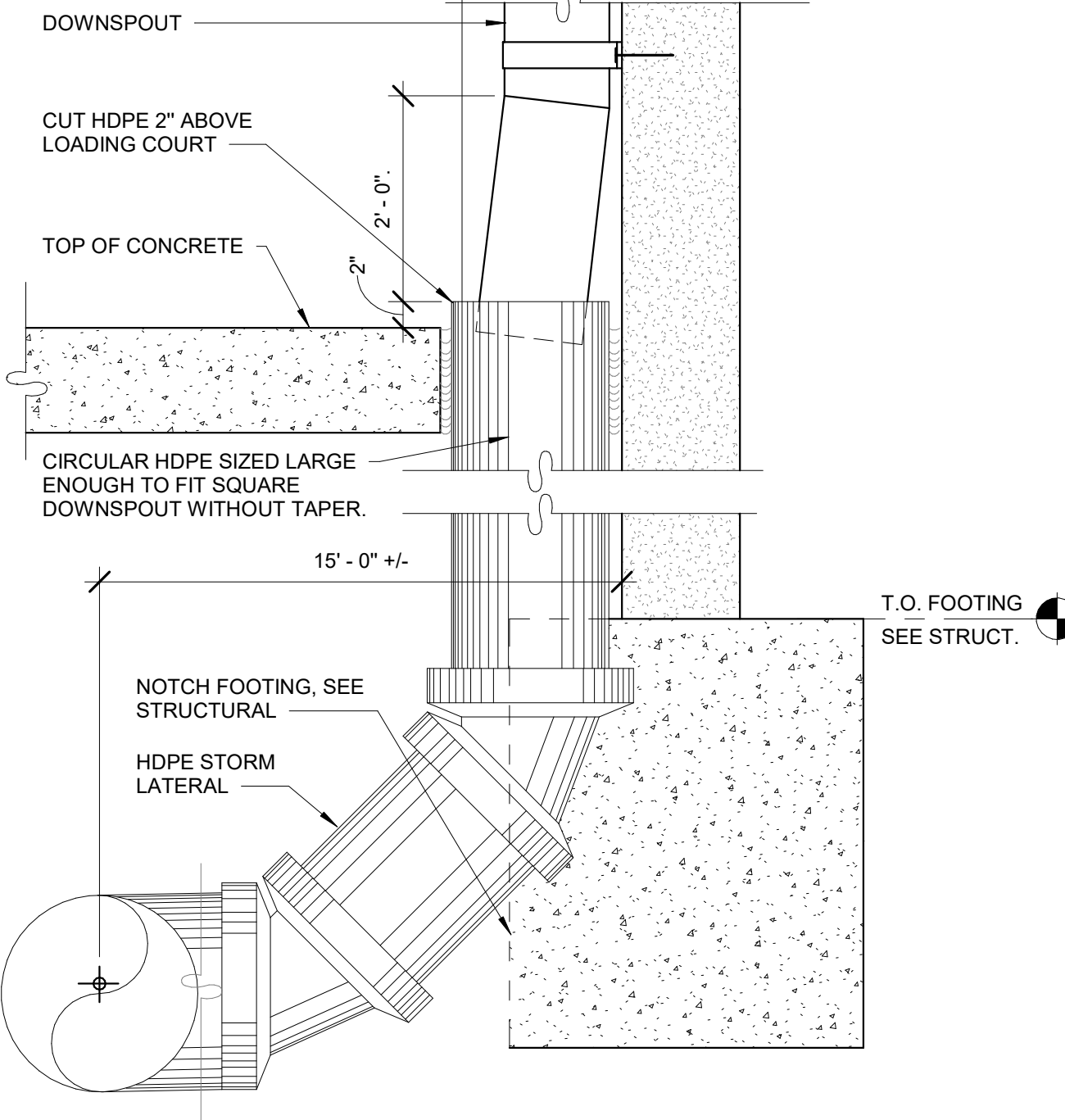
NOTE: SEE PLUMBING DRAWINGS



SCUPPER BOX BLOCKING

A3.7 | REVISION DATE: 11.12.2018 | SCALE: 1" = 1'-0"

2



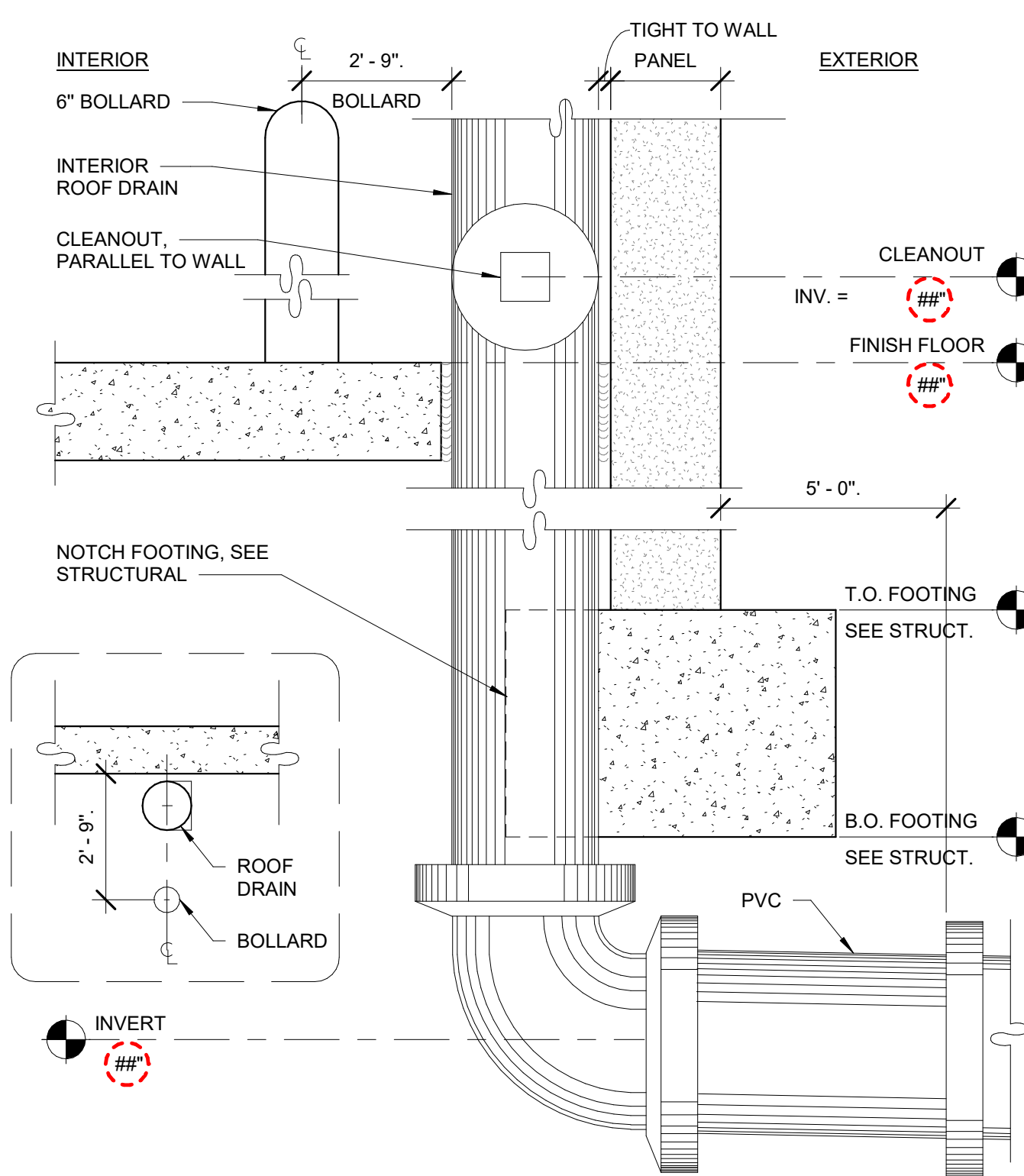
DOWNSPOUT FOUNDATION SECTION

A3.5 | REVISION DATE: 11.12.2018 | SCALE: 1" = 1'-0"

19

DESIGN BUILD MANAGER TO VERIFY DIMENSIONS

NOTE: SEE PLUMBING DRAWINGS



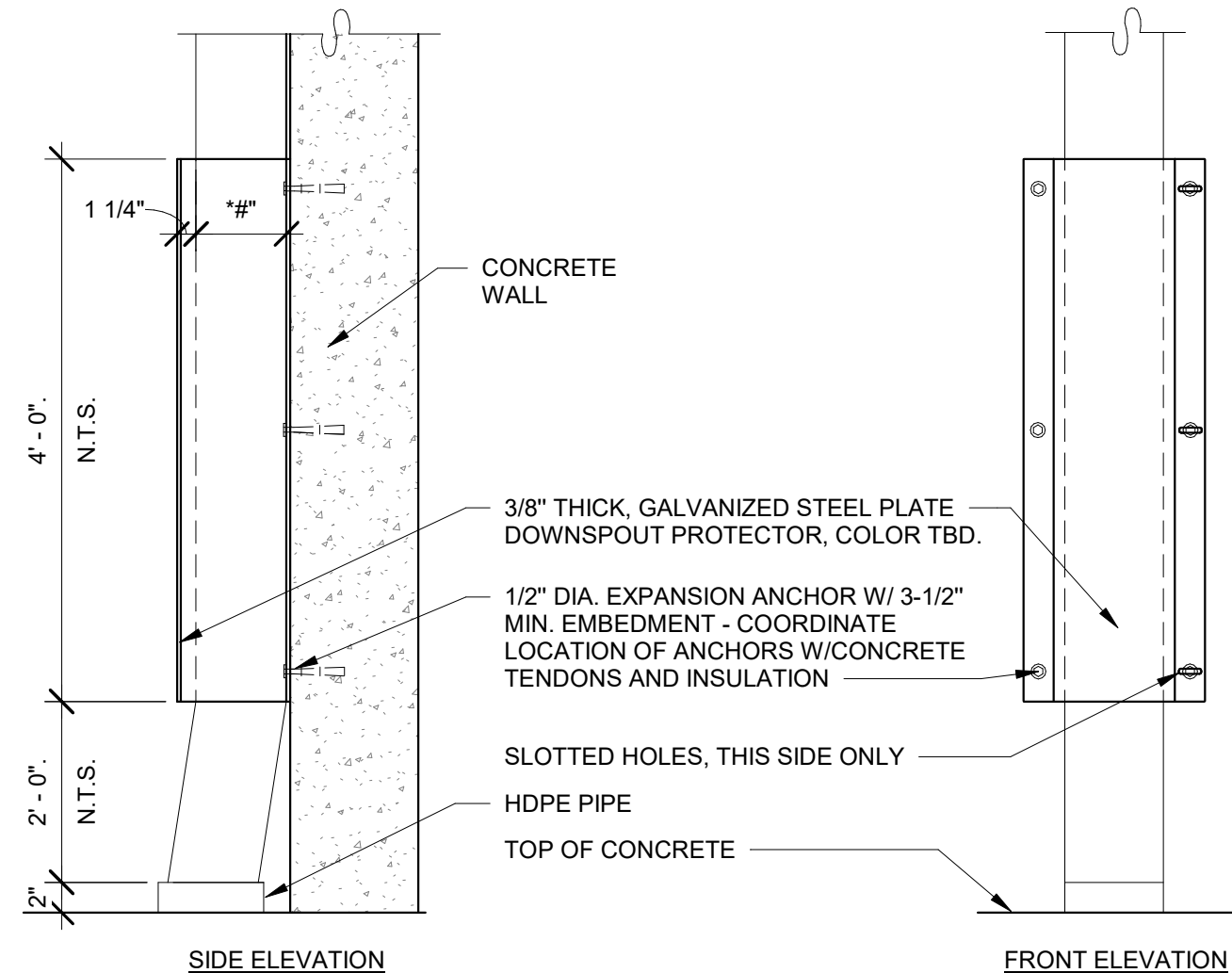
INT ROOF DRAIN FDN SECTION

A3.6 | REVISION DATE: 11.12.2018 | SCALE: 1" = 1'-0"

14

DESIGN BUILD MANAGER TO VERIFY DIMENSIONS

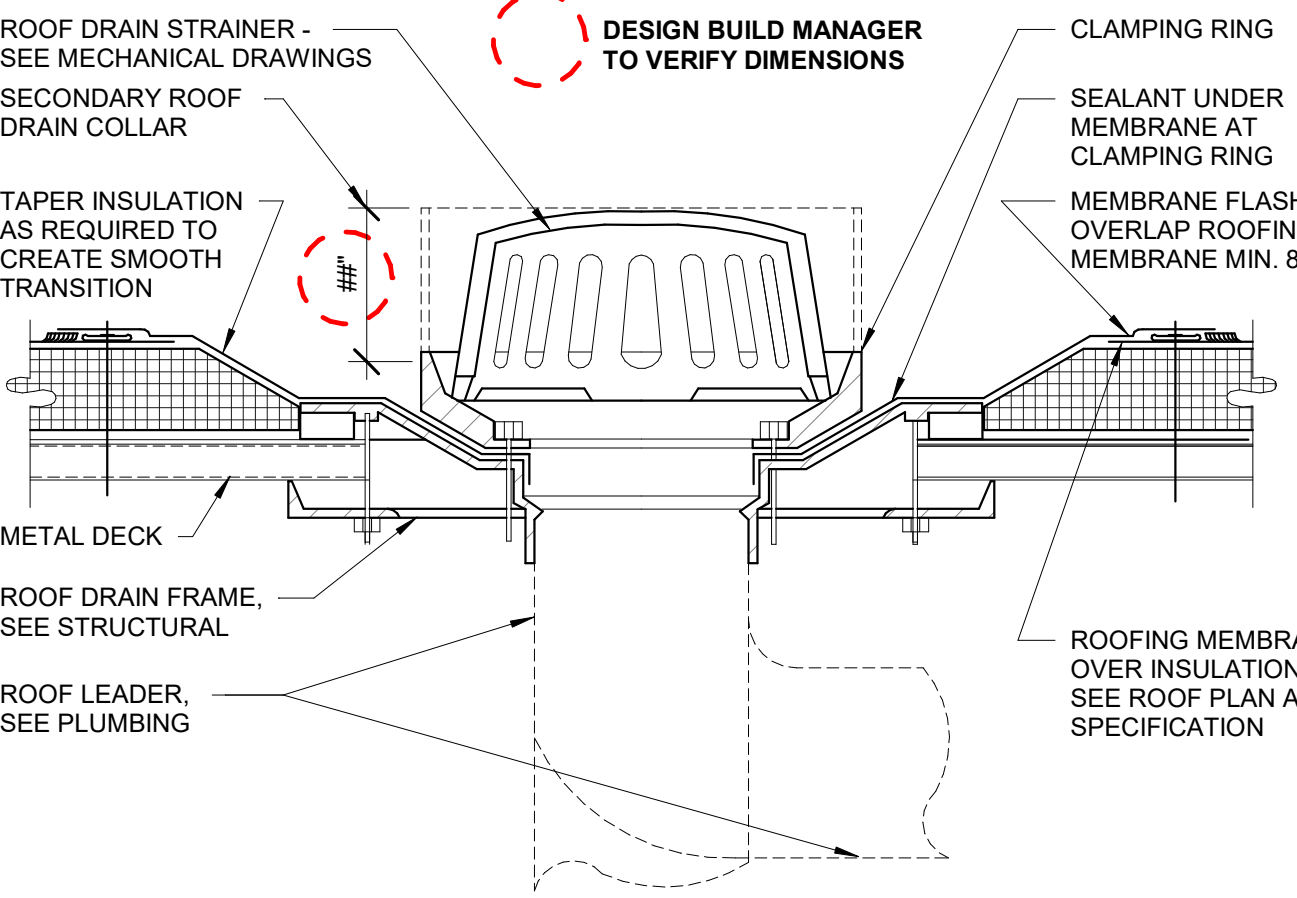
* NOT REQUIRED WHEN PROTECTED BY DOCK SHELTERS
FIELD VERIFY DIMENSIONS PRIOR TO FABRICATION



DOWNSPOUT GUARD - SINGLE

A3.24 | REVISION DATE: 04.23.2019 | SCALE: 1" = 1'-0"

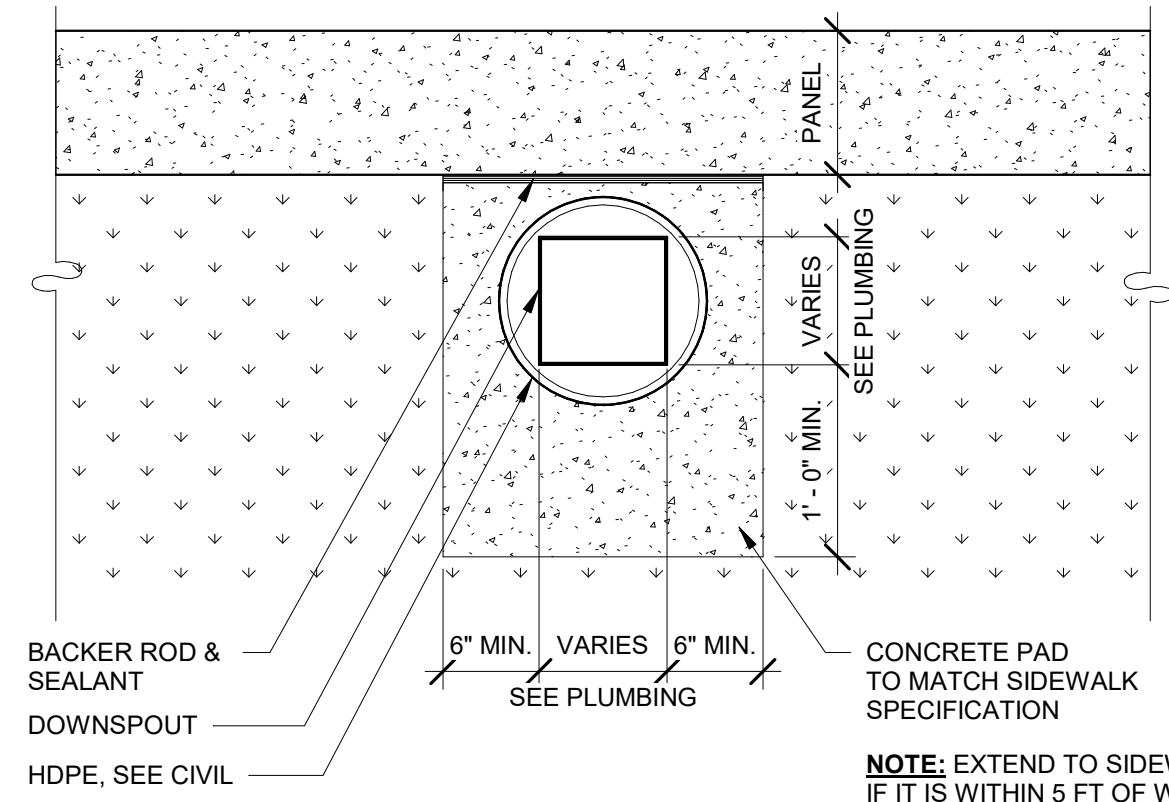
9



INTERNAL ROOF DRAIN

A3.21 | REVISION DATE: 11.12.2018 | SCALE: 1 1/2" = 1'-0"

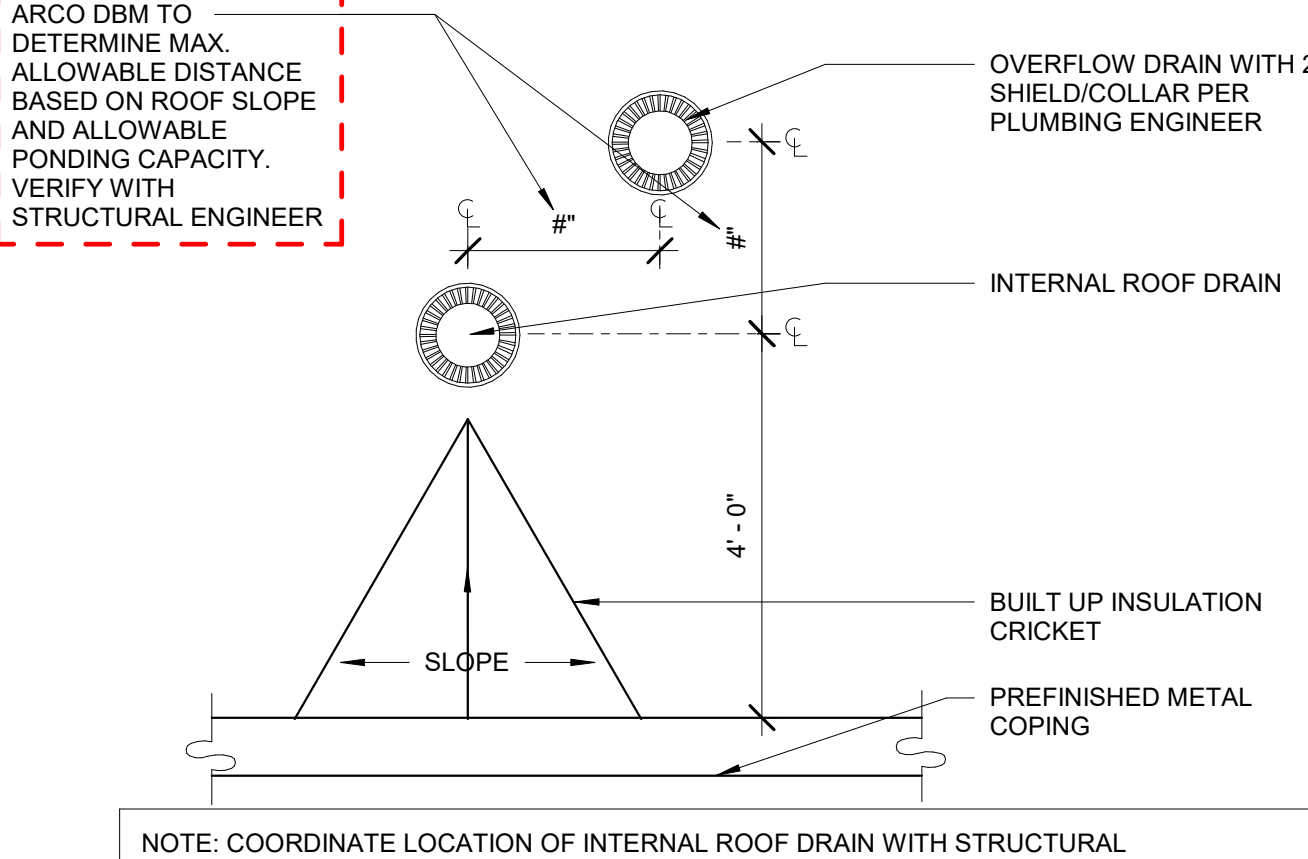
4



DOWNSPOUT CONCRETE PAD

REVISION DATE: 05.13.2021 | SCALE: 1" = 1'-0"

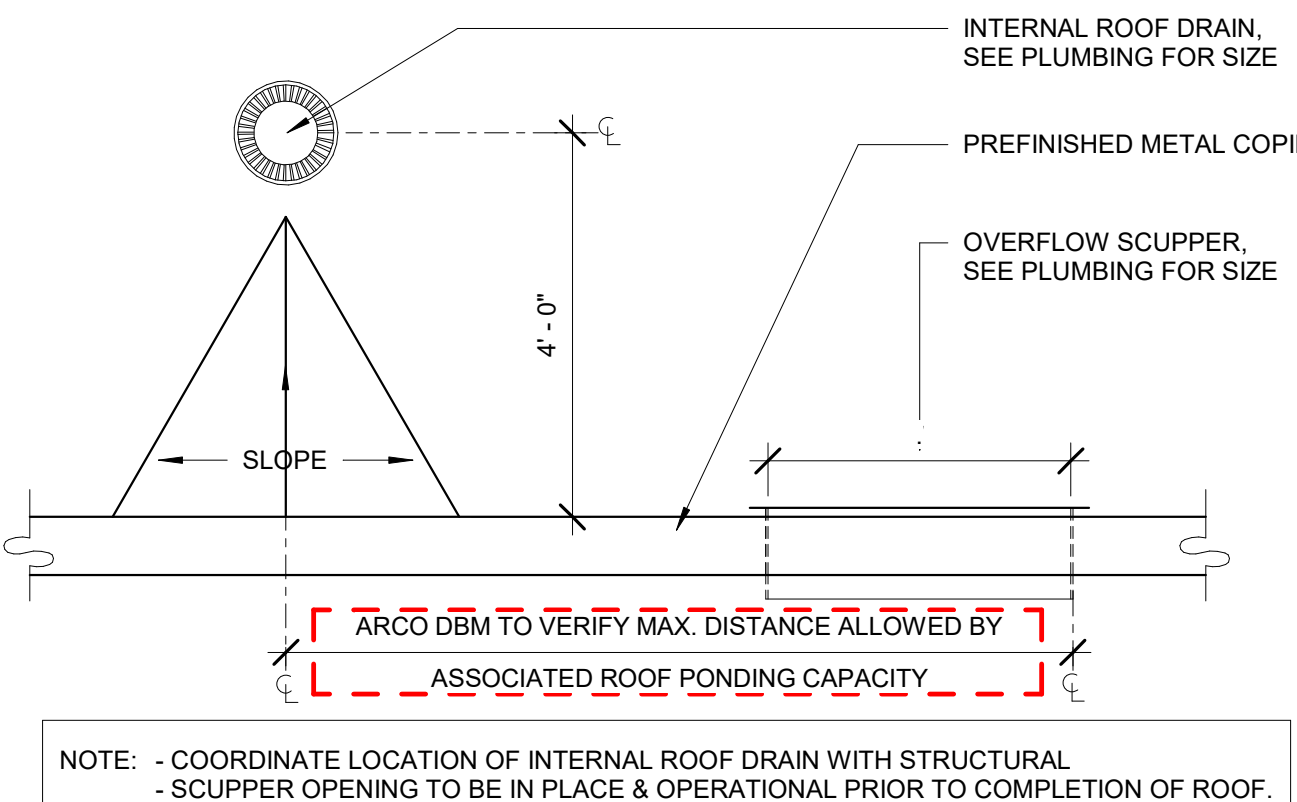
20



INT DRAIN & INT OVERFLOW

A3.23 | REVISION DATE: 11.12.2018 | SCALE: 1/2" = 1'-0"

10



INT DRAIN & OVERFLOW SCUPPER

A3.22 | REVISION DATE: 11.12.2018 | SCALE: 1/2" = 1'-0"

5

DESIGNER / BUILDER

ARCO
DESIGN/BUILD
INDUSTRIAL

44 SOUTH BROADWAY, SUITE 1003
WHITE PLAINS, NY 10601
P: 914.821.5535 F: 914.306.8010

ADBI DESIGN SERVICES

Lincoln Equities Group, LLC

PROJECT TITLE

**LINCOLN
LOGISTICS
BREWSTER -
BLDG B**
NY-312 & PUGSLEY RD,
SOUTHEAST, NY 10509

ARCHITECT

ADBI / DESIGN SERVICES LLC
44 SOUTH BROADWAY, SUITE 1003
WHITE PLAINS, NY 10601

CIVIL ENGINEER

LANGAN ENGINEERING
300 KIMBALL DRIVE
PARSHIPPANY, NJ 07054

STRUCTURAL ENGINEER

SMITH ROBERTS AND ASSOCIATES, INC.
6501 BLUFF RD.
INDIANAPOLIS, INDIANA 46217

MECHANICAL ENGINEER

NATIONAL DESIGN/ BUILD SERVICES
11840 BORMAN DRIVE
ST. LOUIS, MO 63146

ELECTRICAL ENGINEER

FBX ENGINEERING
5 CHRISTY DRIVE, SUITE 307
CHADDS FORD, PA 19317

PLUMBING ENGINEER

MCCARTHY ENGINEERING ASSOCIATES,
INC.
315 EAST SECOND STREET
BOYERTOWN, PA 19512

FIRE PROTECTION ENGINEER

S A COMUNALE CO. INC.
2900 NEWPARK DRIVE
BARBERTON, OH 44203

SEAL

JOSEPH V. DIGIORGIO | NY: 042948

SUBMITTALS

NO.	DATE	DESCRIPTION
05.27.2022		PROGRESS SET

PROJECT NO.

AS286-21/ NY131

SHEET TITLE

ROOF DETAILS

SHEET NO.

A-8.30